

# PROFESSIONAL SERIES OFFSET PROex216-7-Q-0-N4

## 216-235 MHz

### ANTENNA SPECIFICATIONS

Operating Frequency (VSWR $\leq$ 1.5) MHz	216-235
Nominal Gain (dBi)	7.6
Horizontal Beamwidth (Deg-3dB)	210
Vertical Beamwidth (Deg-3dB)	34
Power Rating (W)	300
Length (inches)	96
Width (inches)	17
Antenna Weight (lbs.)	22
Cross Sectional Area (Max. Ft <sup>2</sup> )	2.5
Lateral Thrust at 100mph (lbs.)	63
Rated Wind Velocity (mph)	90
Rated Wind Velocity with 1/2" radial ice (mph)	63

The **PROex216-7-Q-0** has been specifically engineered to meet or exceed all the requirements of a broadband, offset dipole *professional grade* antenna.

This antenna provides **7.6 dBi** gain and operates effectively across the operating range of **216-235 MHz** with a VSWR of 1.5:1 or less.

The dipole to mast spacing is  $\frac{1}{4}$  wave. All **WaveLink Antenna PRO Series** offset antennas are manufactured using high strength 6061 T6 aluminum to ensure consistent operating performance.

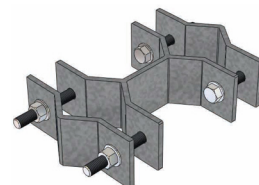
Each *dipole junction* is welded in a fixed position, incorporating a tuned, internal cable harness, thereby eliminating any exposure to the elements; every broadband dipole is fixed in place by a CNC-machined aluminum saddle. **These two features combine to minimize or even eliminate all potential intermod or misalignment problems.**

In addition, the dipoles are anodized to protect against environmental degradation. The **PROex216-7** is made standard with 5' of RG213 cable with a soldered N-female crimp connector.



PROex216-7 is equipped with a standard feed line length of 5' RG213 cable and N-Female connector. Please contact our sales staff for alternate connector requirements.

Extended feed line available in 5' increments up to a maximum of 50'. All extended feed line antennas equipped with LMR400 cable and N-Male connector.



Suggested mounting bracket  
C1002  
(Bracket not included)