

PROFESSIONAL GRADE YAGI PRO169-8

169-174 MHz

ANTENNA SPECIFICATIONS

Operating Frequency (VSWR \leq 1.5) MHz	169-174
Nominal Gain (dBi)	8.6
Horizontal Beamwidth (Deg-3dB)	92
Vertical Beamwidth (Deg-3dB)	62
Front To Back Ratio (dB)	15
Power Rating (W)	300
Length (inches)	60
Width (inches)	33.3
Antenna Weight (lbs.)	6.5
Cross Sectional Area (Max. Ft ²)	1.18
Lateral Thrust at 100mph (lbs.)	29.5
Rated Wind Velocity (mph)	150
Rated Wind Velocity with 1/2" radial ice (mph)	125



PRO169-8 is equipped with a standard feed line length of 5' and N-Female connector.

Please contact our sales staff for alternate connector requirements.

Extended feed line available in 5' increments up to a maximum of 50'. All extended feed line antennas equipped with LMR400 cable and N-Male connector.

The **PRO169-8** is engineered to meet or exceed the requirements of a broadband, high gain, *Professional Grade VHF Yagi antenna*.

The **PRO169-8** provides **8 dBi** gain and operates effectively across the frequency band of **169-174 MHz** with a VSWR of 1.5:1 or less.

All **WaveLink Professional Grade** antennas are manufactured using high strength 6061-T6 aluminum. The dipole and directive elements are fully welded to the boom completely eliminating misalignment problems. The antenna is also electrically **one piece**, effectively eliminating intermod issues and future performance degradation.

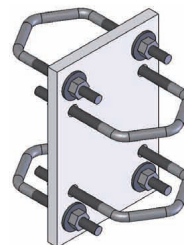
The dipole design incorporates an integral feed cable available in lengths up to 50 feet.

The extended feed line option offers many benefits:

1. Dramatically reduces install time, by up to 2 hours per site
2. Completely eliminates the connector at the antenna
3. Improves signal strength 1/2 to 3/4 of a dB
4. Eliminates connector weatherproofing concerns
5. Significantly reduces long term cost of ownership

The **PRO169-8** is anodized to protect against environmental degradation even in the most severe environments.

[To view polar plots for this antenna please visit www.wavelinkantenna.com/plots](http://www.wavelinkantenna.com/plots)



Includes mounting bracket
C1005

Easily permits vertical or horizontal polarization.
Mounts on 1"-3 1/2" pipe.