

# PROFESSIONAL GRADE OMNI PRO902-11

902-928 MHz

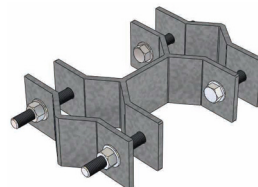
## ANTENNA SPECIFICATIONS

Operating Frequency (VSWR $\leq$ 1.5) MHz	902-928
Nominal Gain (dBi)	11
Horizontal Beamwidth (Deg-3dB)	360
Vertical Beamwidth (Deg-3dB)	5
Power Rating (W)	200
Length (inches)	120.5
Width (inches)	2.5
Antenna Weight (lbs.)	12.5
Cross Sectional Area (Max. Ft <sup>2</sup> )	1.9
Lateral Thrust at 100mph (lbs.)	47.5
Rated Wind Velocity (mph)	120
Rated Wind Velocity with 1/2" radial ice (mph)	90

The **PRO902-11** is engineered to meet or exceed the requirements for a rugged, high gain outdoor omni-directional antenna. This antenna provides **11 dBi** gain and operates effectively across the operating range of **902- 928 MHz** with a VSWR of 1.5:1 or less. Every **WaveLink Professional Grade** Omni is built using a UV-resistant fiberglass radome, coupled to a machined, heavy duty aluminum base. The 6061-T6 aluminum base is anodized to protect against environmental degradation. The elongated N-Female connector is recessed within the base to minimize exposure, while the large inside diameter allows easy access for the connection. The antenna is supplied with two heavy duty mounting brackets.



PRO902-11 equipped with integrated N-Female connector



Includes mounting brackets  
C1002 (2 included)