

## PROFESSIONAL GRADE OMNI PROomni1350-8

1350-1390 Mhz  
8 dBi Gain

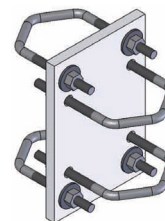
### ANTENNA SPECIFICATIONS

Operating Frequency (VSWR ≤ 1.5) MHz	1350-1390
Nominal Gain (dBi)	8
Horizontal Beamwidth (Deg-3dB)	360
Vertical Beamwidth (Deg-3dB)	15
Power Rating (W)	250
Length (inches)	47
Width (inches)	2
Antenna Weight (lbs.)	4
Cross Sectional Area (Max. Ft <sup>2</sup> )	0.68
Lateral Thrust at 100mph (lbs.)	17
Rated Wind Velocity (mph)	150
Rated Wind Velocity with 1/2" radial ice (mph)	125

The **PROomni1350-8** is engineered to meet or exceed the mechanical requirements for a rugged, medium gain outdoor omni-directional antenna. This antenna provides **8 dBi** gain and operates across the operating range of **1350-1390 MHz** with a VSWR of 1.5:1 or less. Every **WaveLink Professional Grade Omni** is built using a UV-resistant fiberglass radome, coupled to a CNC-machined, heavy duty 6061 aluminum base. The base is anodized to protect against environmental degradation. An elongated N-Female connector is recessed within the base to minimize exposure to rain and snow, while the large inside diameter allows easy access for the connection. The antenna is supplied with a C1005 mounting clamp.



PROomni1350-8 equipped with integrated N-Female connector



Includes mounting bracket C1005