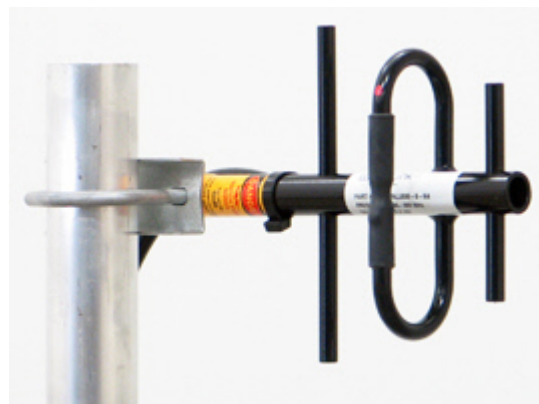


VALU SERIES YAGI VALU890-8

890-960 MHz

ANTENNA SPECIFICATIONS

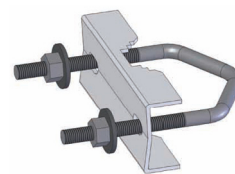
Operating Frequency (VSWR \leq 1.5) MHz	890-960
Nominal Gain (dBi)	8.6
Horizontal Beamwidth (Deg-3dB)	110
Vertical Beamwidth (Deg-3dB)	62
Front To Back Ratio (dB)	15
Power Rating (W)	200
Length (inches)	14
Width (inches)	6.8
Antenna Weight (lbs.)	1.5
Cross Sectional Area (Max. Ft ²)	0.12
Lateral Thrust at 100mph (lbs.)	3
Rated Wind Velocity (mph)	125
Rated Wind Velocity with 1/2" radial ice (mph)	120



VALU890-8 is equipped with a standard feed line length of 2' LMR400 cable and N-Female connector.

The **VALU890-8** is engineered to meet or exceed the expectations of wireless system operators looking for a competitively priced, dependable *utility grade* antenna. This antenna provides **8.6 dBi** gain and operates effectively across the operating range of **890-960 MHz** with a VSWR of 1.5:1 or less. All **WaveLink VALU Series** antennas are manufactured using high strength 6061-T6 aluminum to ensure consistent operating performance; solid elements complement the fully welded dipole, which incorporates a standard 2' integral feed cable. The antenna boom is pre-drilled to allow vertical or horizontal polarization. The **VALU890-8** is fully coated with a black thermoset polymer to ensure continuous protection against environmental degradation.

To view polar plots for this antenna please visit www.wavelinkantenna.com/plots



Includes mounting bracket
C1022

Easily permits vertical or horizontal polarization. Mounts on 1"-2³/₈" pipe.