

## 902-928 MHz

## VALU SERIES OMNI VALUomni902-5

### ANTENNA SPECIFICATIONS

Operating Frequency (VSWR $\leq$ 1.5) MHz	902-928
Nominal Gain (dBi)	5
Horizontal Beamwidth (Deg-3dB)	360
Vertical Beamwidth (Deg-3dB)	28
Power Rating (W)	200
Length (inches)	51.5
Width (inches)	2.38
Antenna Weight (lbs.)	4
Cross Sectional Area (Max. Ft <sup>2</sup> )	0.72
Lateral Thrust at 100mph (lbs.)	18
Rated Wind Velocity (mph)	125
Rated Wind Velocity with 1/2" radical ice (mph)	100

The **VALUomni902-5** is engineered to meet the requirements for a cost effective, dependable outdoor omni-directional antenna.

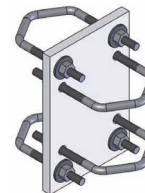
This antenna provides **5 dBi** gain and operates effectively across the operating range of **902-928 MHz** with a VSWR of 1.5:1 or less.

Every **WaveLink VALU Series** omni is made with a UV-stable, all season radome that is securely matched to a heavy duty, anodized aluminum base, ensuring trouble free, consistent operation.

The elongated N-Female connector is recessed within the base to minimize exposure, while the large inside diameter allows easy access for the connection. Supplied with mounting hardware.



VALUomni902-5 equipped with Integrated N-Female connector



Includes Mounting Bracket C1005 (1 included)