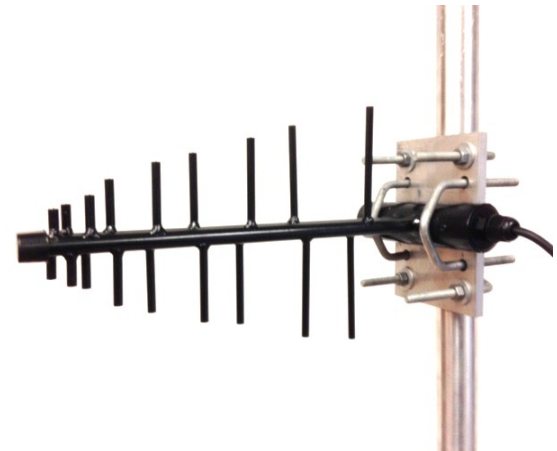


PROFESSIONAL GRADE LOG PERIODIC PROWB727-8

690-2700 MHz

PROFESSIONAL GRADE WIDE BAND DIRECTIONAL ANTENNA	690 - 2700
Operating Frequency (VSWR ≤ 1.5) MHz	
Nominal Gain (dBi)	8
Horizontal Beamwidth (Deg-3dB)	72
Vertical Beamwidth (Deg-3dB)	70
Front To Back Ratio (dB)	20
Power Rating (W)	50
Impedance(Ohms)	50
Length x Width (inches)	13.5 x 5.5
Antenna Weight (lbs.)	1.25
Cross Sectional Area (Max. Ft ²)	0.23
Lateral Thrust at 100mph (lbs.)	5.5
Rated Wind Velocity (mph)	125
Rated Wind Velocity with 1/2" radical (mph)	120



The PROWB727-8 is engineered to meet or exceed the requirements of wide band, high gain, professional grade log-periodic directional antenna and is equipped with a standard feedline length of 2' LMR240 and N-Male connector.

The PROWB727-8 provides 8dBi gain and operates effectively across the frequency band 690-2700 MHz with a VSWR of 1.5:1 or less.

All WaveLink Professional Grade antennas are manufactured using high strength 6061-T6 aluminum. The directive elements are welded to the boom completely eliminating misalignment problems. The antenna is also electrically one piece, effectively eliminating inter mod issues and future performance degradation.

The PROWB727-8 is black anodized for appearance and corrosion resistance.

Includes mounting bracket C1005 which easily permits vertical(60 degrees tilt) and horizontal polarization.
Mounts on 1" - 2 3/8" pipe.