

PROFESSIONAL SERIES OFFSET PROex216-10-H-0-N4

216-235 MHz

ANTENNA SPECIFICATIONS

| | |
|--|---------|
| Operating Frequency (VSWR ≤ 1.5) MHz | 216-235 |
| Nominal Gain (dBi) | 10.1 |
| Horizontal Beamwidth (Deg-3dB) | 210 |
| Vertical Beamwidth (Deg-3dB) | 17 |
| Power Rating (W) | 300 |
| Length (inches) | 168 |
| Width (inches) | 28 |
| Antenna Weight (lbs.) | 36 |
| Cross Sectional Area (Max. Ft ²) | 4.1 |
| Lateral Thrust at 100mph (lbs.) | 103 |
| Rated Wind Velocity (mph) | 150 |
| Rated Wind Velocity with 1/2" radial ice (mph) | 90 |

The **PROex216-10-H-0** has been specifically engineered to meet or exceed all the requirements of a broadband, offset dipole *professional grade* antenna.

This antenna provides **10.1 dBi** gain and operates effectively across the operating range of **216-235 MHz** with a VSWR of 1.5:1 or less.

The dipole to mast spacing is ½ wave. All **WaveLink Antenna PRO Series** offset antennas are manufactured using high strength 6061 T6 aluminum to ensure consistent operating performance.

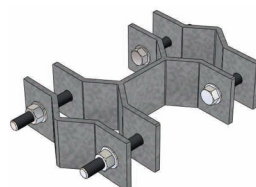
Each *dipole junction* is welded in a fixed position, incorporating a tuned, internal cable harness, thereby eliminating any exposure to the elements; every broadband dipole is fixed in place by a CNC-machined aluminum saddle. **These two features combine to minimize or even eliminate all potential intermod or misalignment problems.**

In addition, the dipoles are anodized to protect against environmental degradation. The **PROex216-10** is made standard with 5' of RG213 cable with a soldered N-female crimp connector.



PROex216-10 is equipped with a standard feed line length of 5' RG213 cable and N-Female connector. Please contact our sales staff for alternate connector requirements.

Extended feed line available in 5' increments up to a maximum of 50'. All extended feed line antennas equipped with LMR400 cable and N-Male connector.



Suggested mounting bracket
C1002
(Bracket not included)