

# PROFESSIONAL GRADE OMNI VALU750-8-N4

750-790 MHz

## ANTENNA SPECIFICATIONS

Operating Frequency (VSWR $\leq$ 1.5) MHz	750-790
Nominal Gain (dBi)	8.5
Horizontal Beamwidth (Deg-3dB)	360
Vertical Beamwidth (Deg-3dB)	16
Power Rating (W)	200
Length (inches)	52
Width (inches)	2.5
Antenna Weight (lbs.)	7
Cross Sectional Area (Max. Ft <sup>2</sup> )	1.17
Lateral Thrust at 100mph (lbs.)	29.25
Rated Wind Velocity (mph)	150
Rated Wind Velocity with 1/2" radial ice (mph)	125

The **VALU750-8** is engineered to meet the requirements for a cost effective, dependable outdoor omni-directional antenna.

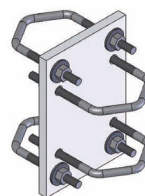
This antenna provides **8 dBi** gain and operates effectively across the operating range of **750-790 MHz**- with a VSWR of 1.5:1 or less.

Every **WaveLink VALU Series** omni is made with a UV-stable, all season radome that is securely matched to a heavy duty, anodized aluminum base, ensuring trouble free, consistent operation.

The elongated N-Female connector is recessed within the base to minimize exposure, while the large inside diameter allows easy access for the connection. Supplied with mounting hardware.



VALU750-8 equipped with integrated N-Female connector



Includes Mounting Bracket C1005 (1 included)