

PROFESSIONAL GRADE OMNI VALU928-8

928-960 MHz

ANTENNA SPECIFICATIONS

Operating Frequency (VSWR \leq 1.5) MHz	928-960
Nominal Gain (dBi)	8.5
Horizontal Beamwidth (Deg-3dB)	360
Vertical Beamwidth (Deg-3dB)	15
Power Rating (W)	200
Length (inches)	72
Width (inches)	2.5
Antenna Weight (lbs.)	10
Cross Sectional Area (Max. Ft ²)	1.17
Lateral Thrust at 100mph (lbs.)	29.25
Rated Wind Velocity (mph)	150
Rated Wind Velocity with 1/2" radial ice (mph)	125

The **VALU928-8** is engineered to meet the requirements for a cost effective, dependable outdoor omni-directional antenna.

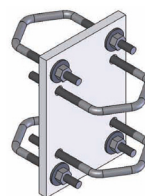
This antenna provides **8 dBi** gain and operates effectively across the operating range of **928-960 MHz** with a VSWR of 1.5:1 or less.

Every **WaveLink VALU Series** omni is made with a UV-stable, all season radome that is securely matched to a heavy duty, anodized aluminum base, ensuring trouble free, consistent operation.

The elongated N-Female connector is recessed within the base to minimize exposure, while the large inside diameter allows easy access for the connection. Supplied with mounting hardware.



VALU928-8 equipped with integrated N-Female connector



Includes Mounting Bracket C1005 (1 included)