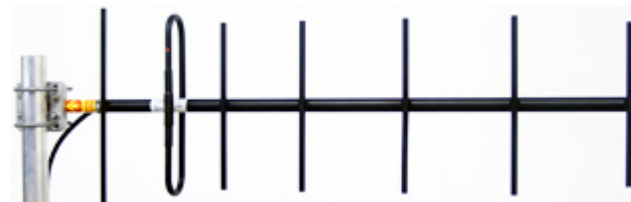


PROFESSIONAL GRADE YAGI PRO403-12

403-430 MHz

ANTENNA SPECIFICATIONS

Operating Frequency (VSWR \leq 1.5) MHz	403-430
Nominal Gain (dBi)	12
Horizontal Beamwidth (Deg-3dB)	52
Vertical Beamwidth (Deg-3dB)	46
Front To Back Ratio (dB)	20
Power Rating (W)	250
Length (inches)	44
Width (inches)	14.3
Antenna Weight (lbs.)	3.5
Cross Sectional Area (Max. Ft ²)	0.53
Lateral Thrust at 100mph (lbs.)	20.84
Rated Wind Velocity (mph)	100
Rated Wind Velocity with 1/2" radial ice (mph)	80



PRO403-12 is equipped with a standard feed line length of 2' LMR400 UltraFlex® cable and N-Male connector. Please contact our sales staff for alternate connector requirements.

Extended feed line available in 5' increments up to a maximum of 50'. All extended feed line antennas equipped with LMR400 cable and N-Male connector.

The **PRO403-12** is engineered to meet or exceed the requirements of a broadband, high gain, *Professional Grade 400 MHz Yagi antenna*.

The **PRO403-12** provides **12 dBi** gain and operates effectively across the frequency band of **403-430 MHz** with a VSWR of 1.5:1 or less.

All **WaveLink Professional Grade** antennas are manufactured using high strength 6061-T6 aluminum. The dipole and directive elements are fully welded to the boom completely eliminating misalignment problems. The antenna is also electrically **one piece**, effectively eliminating intermod issues and future performance degradation.

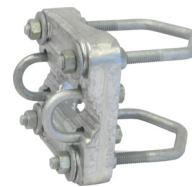
The dipole design incorporates an integral feed cable available in lengths up to 50 feet.

The extended feed line option offers many benefits:

1. Dramatically reduces install time, by up to 2 hours per site
2. Completely eliminates the connector at the antenna
3. Improves signal strength 1/2 to 3/4 of a dB
4. Eliminates connector weatherproofing concerns
5. Significantly reduces long term cost of ownership

The **PRO403-12** is anodized to protect against environmental degradation even in the most severe environments.

[To view polar plots for this antenna please visit www.wavelinkantenna.com/plots](http://www.wavelinkantenna.com/plots)



Includes mounting bracket
C1001A

Easily permits vertical or horizontal polarization.
Mounts on 1"-2 5/8" OD pipe.