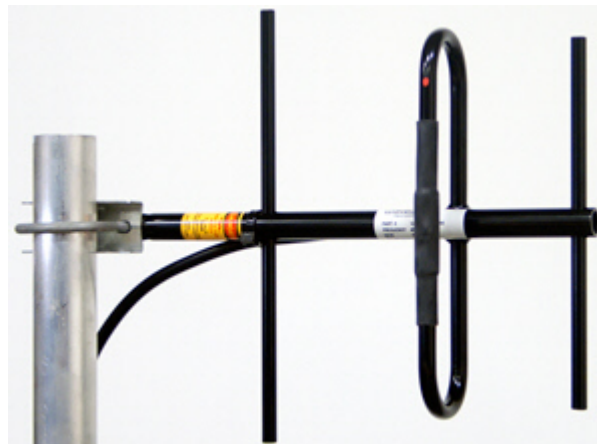


VALU SERIES YAGI VALU450-8

450-470 MHz

ANTENNA SPECIFICATIONS

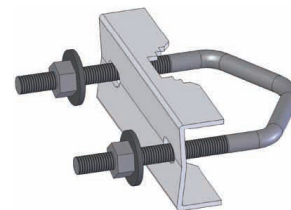
Operating Frequency (VSWR \leq 1.5) MHz	450-470
Nominal Gain (dBi)	8
Horizontal Beamwidth (Deg-3dB)	104
Vertical Beamwidth (Deg-3dB)	65
Front To Back Ratio (dB)	15
Power Rating (W)	250
Length (inches)	18
Width (inches)	13
Antenna Weight (lbs.)	2
Cross Sectional Area (Max. Ft ²)	0.21
Lateral Thrust at 100mph (lbs.)	5.25
Rated Wind Velocity (mph)	125
Rated Wind Velocity with 1/2" radial ice (mph)	120



VALU450-8 is equipped with a standard feed line length of 2' RG213U cable and N-Female connector.

The **VALU450-8** is engineered to meet or exceed the expectations of wireless system operators looking for a competitively priced, dependable *utility grade* antenna. This antenna provides **8 dBi** gain and operates effectively across the operating range of **450-470 MHz** with a VSWR of 1.5:1 or less. All **WaveLink VALU Series** antennas are manufactured using high strength 6061-T6 aluminum to ensure consistent operating performance; solid elements complement the fully welded dipole, which incorporates a standard 2' integral feed cable. The **VALU450-8** is fully coated with a black thermoset polymer to ensure continuous protection against environmental degradation.

To view polar plots for this antenna please visit www.wavelinkantenna.com/plots



Includes mounting bracket
C1022

Easily permits vertical or horizontal polarization. Mounts on 1"-2³/₈" pipe.