

## VALU SERIES YAGI VALU890-14

890-960 MHz

### ANTENNA SPECIFICATIONS

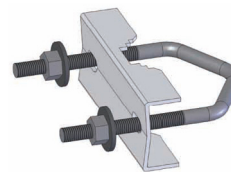
Operating Frequency (VSWR $\leq$ 1.5) MHz	890-960
Nominal Gain (dBi)	14
Horizontal Beamwidth (Deg-3dB)	40
Vertical Beamwidth (Deg-3dB)	34
Front To Back Ratio (dB)	20
Power Rating (W)	200
Length (inches)	37
Width (inches)	6.6
Antenna Weight (lbs.)	2.5
Cross Sectional Area (Max. Ft <sup>2</sup> )	0.35
Lateral Thrust at 100mph (lbs.)	8.75
Rated Wind Velocity (mph)	125
Rated Wind Velocity with 1/2" radial ice (mph)	120



VALU890-14 is equipped with a standard feed line length of 2' LMR400 cable and N-Female connector.

To view polar plots for this antenna please visit [www.wavelinkantenna.com/plots](http://www.wavelinkantenna.com/plots)

The **VALU890-14** is engineered to meet or exceed the expectations of wireless system operators looking for a competitively priced, dependable *utility grade* antenna. This antenna provides **14 dBi** gain and operates effectively across the operating range of **890-960 MHz** with a VSWR of 1.5:1 or less. All **WaveLink VALU Series** antennas are manufactured using high strength 6061-T6 aluminum to ensure consistent operating performance; solid elements complement the fully welded dipole, which incorporates a standard 2' integral feed cable. The antenna boom is pre-drilled to allow vertical or horizontal polarization. The **VALU890-14** is fully coated with a black thermoset polymer to ensure continuous protection against environmental degradation.



Includes mounting bracket  
C1022

Easily permits vertical or horizontal polarization. Mounts on 1"-2 3/8" pipe.